

HOW YOU CAN REDUCE CELLULITE

CREAMS & SCRUBS

- CAFFEINE, RETINOL, & DIMETHYLAMINOETHANOL (DMAE), APPLIED TO SKIN TO HELP REDUCE APPEARANCE OF CELLULITE.

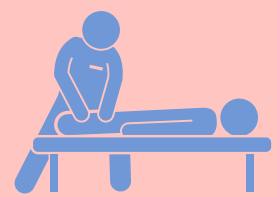
NON INVASIVE
NO DOWNTIME
RESULTS LAST: 1 DAY



MASSAGES & LYMPHATIC DRAINAGE

- DEEP TISSUE MASSAGES, PRESSOTHERAPY, & ENDERMOLOGIE USED TO PROMOTE LYMPHATIC DRAINAGE, REDUCING APPEARANCE OF CELLULITE.

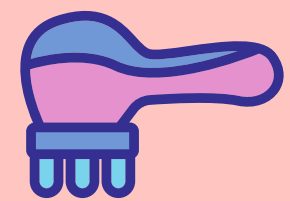
NON INVASIVE
NO DOWNTIME
RESULTS LAST: 1-3 DAYS



VELASHAPE

- INFRARED LIGHT, BI-POLAR RADIO FREQUENCY ENERGY AND VACUUM, CAUSING CONTROLLED HEAT DAMAGE TO FIBROUS BANDS IN TREATMENT AREA, REDUCING APPEARANCE OF CELLULITE.

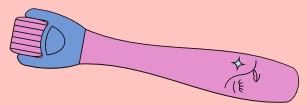
NON INVASIVE
NO DOWNTIME
RESULTS LAST: 2 WEEKS



FRACTIONAL MICRONEEDLING WITH RF

- MICRONEEDLING WITH RADIOFREQUENCY STIMULATES COLLAGEN AND TIGHTENS SKIN, RESULTING IN REDUCTION IN THE APPEARANCE OF CELLULITE.

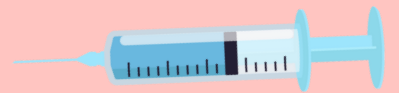
MINIMALLY INVASIVE
NO DOWNTIME
RESULTS LAST: SEVERAL MONTHS



QWO

- COLLAGENASE CLOSTRIDIUM HISTOLYTICUM IS INJECTED INTO CELLULITE DIMPLES, BREAKS UP FIBROUS SEPTAE, ELIMINATES DIMPLES IN THE PROCESS.

MINIMALLY INVASIVE
NO DOWNTIME
RESULTS LAST: PERMANENT



LIPOSUCTION

- LONG ATRAUMATIC CANNULA SUCKS OUT FAT IN TREATMENT AREA, WHICH OCCASIONALLY BREAKS DOWN FIBROUS SEPTAE, REDUCING CELLULITE APPEARANCE

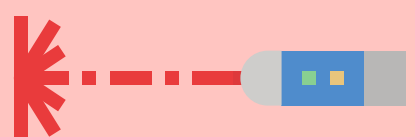


SURGICAL & INVASIVE
1-2 W DOWNTIME
RESULTS LAST: SEMIPERMANENT

CELLULAZE

- ND:YAG 1440-NM LASER IS SURGICALLY INSERTED UNDER THE SKIN TO CUT THROUGH FIBROUS SEPTAE, AND STIMULATE COLLAGEN PRODUCTION FOR TIGHTER SKIN AND MINIMIZED CELLULITE.

SURGICAL & INVASIVE
1-7 D DOWNTIME
RESULTS LAST: 1+ YEARS



CELLFINA

- SEMI-AUTOMATIC TOOL WITH MULTIPLE ROTATING BLADES TO CUT THROUGH FIBROUS SEPTAE UNDERNEATH SKIN, RELEASING THEM FROM THE SKIN AND ELIMINATING CELLULITE DIMPLES IN THE PROCESS.

SURGICAL & INVASIVE
1-7 D DOWNTIME
RESULTS LAST: PERMANENT

